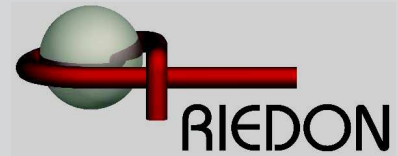


RCS Series

Current Sensing Shunts
77 Amp - 173 Amp

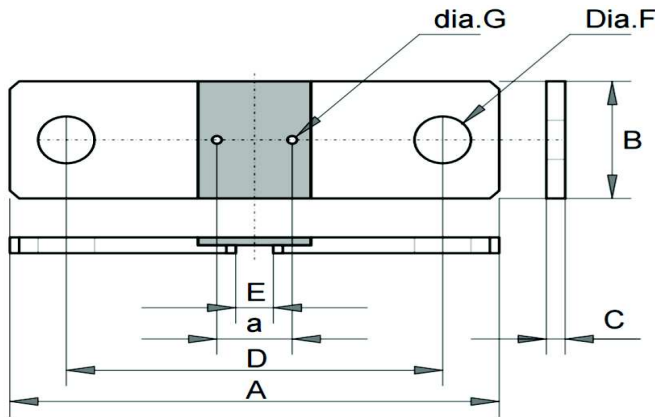


- 3W Power
- 77 Amp to 173 Amp
- 0.1 - 0.5 mOhm Resistance Values
- Simple 4-port Kelvin Structure
- All Welded Construction
- Common Applications: Switchgear, Welding, Power Supply

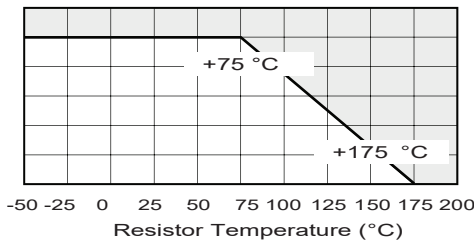
| SPECIFICATIONS | | | |
|----------------|-------------------|--------------|------------------|
| Type | Resistance (mOhm) | Current (A)* | Max Current (A)* |
| RCS1 | 0.1 | 173 | 865 |
| RCS2 | 0.2 | 122 | 610 |
| RCS3 | 0.3 | 100 | 500 |
| RCS4 | 0.4 | 86 | 430 |
| RCS5 | 0.5 | 77 | 385 |

*Note: Current & Max current based on bus-bar mounting

| SPECIFICATIONS | |
|-----------------------|--|
| Resistance Values | 0.1 to 0.5 mOhm |
| Tolerance | ±1% or ±5% |
| TCR | +0 to +100 ppm |
| Power | 3W |
| Max Power | 100W / 0.1s |
| Storage Temperature | -55 to +125 C |
| Operating Temperature | -55 to +175 C |
| Materials | Contact: Ni plated Cu Element: CuMnNi |



Power Derating
% Rated Power



| Dimension | (mm) |
|--------------|------|
| A | 55 |
| B | 15 |
| C | 2 |
| D | 40 |
| F | 6.2 |
| G | 0.8 |
| E (0.1 mOhm) | 7 |
| E (0.2 mOhm) | 9.6 |
| E (0.3 mOhm) | 12 |
| E (0.4 mOhm) | 14.5 |
| E (0.5 mOhm) | 17.5 |

Ordering Information

Part Description: Part Type - OHM - Tolerance

Example: **RCS1 0.1 mOhm 5%**